

Portable Drilling Machine

PRO 111

The PRO 111 is a multifunction machine with Morse Taper No. 4. It is designed for cutting holes up to 4-5/16" (110 mm) diameter or drilling holes up to 1-7/8" (47 mm) diameter. It is equipped with a four speed mechanical gear box and a motor overload protection system with an LED indicator. Its precision and durability are significantly increased thanks to gearbox housing and slide, made as one piece.



Motor Soft Start

Overload Protection
with LED indicator

4 Speed Gearbox

Service Friendly

Integrated Gearbox
Housing with Slide

Semi-automatic
Gib Backlash Adjustment

Magnetic Power
Adhesion Control (MPAC)

Magnetic Field Shape
Control (MFSC)

Unique semi-automatic gib backlash adjustment (patent pending) enables simple, fast and correct adjustments without any expert knowledge or experience. Replaceable spline at the end of armature shaft eliminates laborious and expensive armature maintenance. Compact design allows to drill very close to vertical surface.

The PRO 111 is equipped with a magnetic field shape control system (MFSC) which provides maximum holding power on thin material. A magnetic power adhesion control module (MPAC) detects an adequate adhesive force of electromagnetic base for safe operation.



Portable Drilling Machine

PRO 111



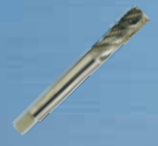
Max Ø 4-5/16"
(110 mm)



Max Ø 1-7/16"
(47 mm)



Max Ø 2-1/2"
(63 mm)



Max 1"
(30 mm)

Standard shipping set:

- Magnetic Base Drilling Machine
- Metal Box
- MT4 Arbor with 19 mm Bore - Through Spindle Continuous Cooling
- Swarf Shield/Cutter Guard
- Coolant Bottle Assembly
- Safety Chain
- Set of Tools with Wedge
- Instruction Manual
- Standard shipping weight – 82 lbs 6 oz (38.2 kg)

Attention: Standard shipping set of PRO 111 includes MT4 Arbor with 3/4" (19 mm) Weldon Bore that accept cutters up to 2-5/16" (60 mm) diameter.

Optional MT4 Arbor with 32 Weldon Bore for cutters of bigger diameter are available.

PRO 111 Technical Specifications		
Spindle	MT4	
Tool holder	3/4" (19 mm) Weldon	
Milling Cutter (Core drill) Ø	max 4-5/16" (110 mm)	
Twist drill Ø	max 1-7/8" (47 mm)	
Countersinking Ø	max 2-1/2" (63 mm)	
Max Tap size	M30 (special tapping attachment required)	
Stroke	9-1/16" (230 mm)	
Max depth of cut	3" (76 mm)	
Voltage	115V/60Hz or 230V/50 Hz	
Power consumption [W]	1800	
Motor Power [W]	1650	
Speeds [rpm]	85/135 160/250	
MFSC (Magnetic Field Shape Control)	yes	
Overload protection	yes	
Overload LED protection	yes	
Magnet - on 1" (25 mm) Plate	Dead Lift	Drill Point Breakaway
	4945 lbs (2242 kg)	1945 lbs. (882 kg)
Magnet Base Dimensions	4-3/4" x 9-7/16" x 2-1/2" (120 x 240 x 63 mm)	
MPAC (Magnetic Power Adhesion Control)	yes	
Min. Workpiece Thickness	3/8" (10 mm)	
Semi-automatic gib backlash adjustment	yes	
Weight	66 lbs 14 oz (31 kg)	
Part Number	PRO111 (115V/60Hz) PRO111-230 (230V/50Hz)	

*All information subject to change without notice.



Manufactured to ISO 9001:2000
Standards by Promotech

PRO 111 BRO-0110